

# The Southwester

Serving near SW, DC since 1964

www.swdc.org

September/October 2003

Circulation 10,000

FREE!

Published by The Southwest Neighborhood Assembly, Inc.—a 501(c) (3) charitable and educational corporation. Reach us at 202-554-8560 or on our website [www.swdc.org](http://www.swdc.org)

## D.C. Council to Vote on SW Waterfront Plan

The D.C. Council Committee of the Whole will vote on adopting the S.W. Waterfront Plan as a Small Area Plan on Tues. Sep. 23. The following report on a new Southwest Waterfront Task Force was received from the NCRC:



outline

Councilwoman Sharon Ambrose, Andrew Altman, Director of the Office of Planning and Theodore N. Carter, CEO of the National Capital Revitalization Corporation ("NCRC"), kicked off the Southwest Waterfront Task Force recently at St. Augustine's Church. Representa-

tives of the business, civic, residential and boating community were asked by NCRC to serve on the task force, which will meet regularly with city officials to receive updates on the waterfront redevelopment. The task force meetings will also provide the community with an opportunity to raise concerns and questions to city leaders.

At the first task force meeting, the Office of Planning reported on the status of the Southwest Waterfront Plan. After the public hearing in March the Office of Planning summarized the testimony and written comments received. Based on these comments, some minor changes were made to the plan, including adding an intersection at the Fish Market to ensure eastbound and westbound vehicular access is maintained. The Plan and the public comments were submitted to the City Council in June. At the Committee of the Whole meeting of the D.C. Council on Tues. Sep. 23 the S.W. Waterfront Plan as a Small Area Plan will be voted on.

NCRC also announced that it is conducting a national search for a Vice President who will oversee the Southwest waterfront project. ■



outline

## SWNA To Hear Changes In SW

The Sep. General Meeting of the Southwest Neighborhood Assembly will hear about new developments in SW on Monday, September 22, 7:30 pm at St. Matthew's Church, 222 M St., SW. It is open to all residents of Southwest.

The speakers are: 1) Mr. Steve Tanner, the developer of the property at Delaware Ave. SW & H (the vacant church) – developments on this

property; 2) the senior warden of St. Matthew's Lutheran Church, Mr. Daniel Felger – update on the church plans; 3) Ms. Christine Hoffner, Parsons Brinkerhoff Consulting Team – L'Enfant Plaza Promenade to the Fish Market; 4) Patricia Lescoe will make a presentation about Mandarin Hotel at the Portals building, and lastly, 5) Rick Bardach, community leader, who will speak about the proposed Greenleaf Rec Center. ■

## Neighborhood Archive Project

By Mark Clark

NEAR the Neighborhood Archive Project, will be taking free photographs of the long term residents of the Washington Sanitary Houses, Carrollburg Place on Wednesdays, Thursdays and Fridays during August and September. Two well known black Washington artists, Michael Platt and Bruce McNeil, will be arranging half hour appointments at 8 1/2 N Street, S.W. to photodocument the current inhabitants of the houses and apartments on both sides of the 1200 block of Carrollburg Place, and the east side of Half Street Southwest. To get one free studio quality photographic portrait, you must meet the following criteria:

1. Have lived in the Washington Sanitary Houses development since January 1, 1993.

2. Be at least 21 years of age.

THERE IS NO COST WHATSOEVER TO PROJECT PARTICIPANTS. You must sign a standard model release form. Senior



Long time Carrollburg Place residents who have participated in the Neighborhood Archive Project are (from left to right) John Desales Campbell, Monroe Scott & Omie Wright

Citizens are encouraged to participate. Please stop by 8 1/2 N Street SW between 11 a.m. and 5 p.m. Wednesday through Friday to schedule your free photographic portrait session. PHOTOS BY APPOINTMENT

ONLY.

The Neighborhood Archive Project is not affiliated with any government body, politics, organization or institution. Please call Mark Clark at 202 488-8191 for further details. ■

## Inside:

Southwest Community Calendar.....	p. 2
From the Guest Editor .....	p. 2
Annual Book Fair At State .....	p. 2
Free Walking Tours Oct 4, 5 .....	p. 2
Black Arts & Heritage .....	p. 2
Best Western Remodels .....	p. 3
Arena Arts Camp .....	p. 3
SWNA, ANC Move Offices .....	p. 3
Highway Constr. Career Training .....	p. 3
Rave Reviews For Cantina Marina .....	p. 3
Gossip On the Waterfront .....	p. 3
Jeff 4th Best of 20 in D.C. ....	p. 3
Music Training, 5th Grade & Up .....	p. 3
Apt. House at Delaware & H SW .....	p. 4
DC Housing "High Performer" .....	p. 4
School's Back .....	p. 5
SW Library .....	p. 5
Mardarin Hotel Opens in Spring .....	p. 6
"Art Enables" at Millennium .....	p. 6
River Park Friends Active in SW .....	p. 6
Update on Mall Redevelopment .....	p. 6
Public Safety Near Waterfront Mall .....	p. 6
41 SW Youth in Summer Program .....	p. 7
Rev. John Talbott Leaves St. A's .....	p. 7
SEU Offers Online Courses .....	p. 7
Arena Stage Perks For SW .....	p. 8
Kiwanis Buffet Fri. Sep. 26 .....	p. 8
Play Readings At Arena Stage .....	p. 8

### From the Guest Editor

Currently so much construction is going on in Southwest and more will be happening in the next few years. *The Southwester* aims to keep you apprised of what is going on. Stay tuned.

We want to welcome our new gossip column, "On the Waterfront". I want to thank all on the staff of this current paper. Susan Fischer, Maurice Boyd (reporter), & two new staff members, Bill Brawner and Mark Clark (reporters).

Hard working Dale MacIver who is usually the editor, had a semi-vacation during the month of August. All he did was be a reporter and continue as co-advertising head. However, September found him back in his old job as the editor, reporter & advertising person. Dale, *The Southwester* couldn't run as smoothly as it does if it weren't for you. You get a big pat on the back, as well as the appreciation from all of us in the community.

—Carole Early

## Annual Book Fair At State Dept.

Used books, art, stamps and coins will be on sale two weekends in Oct. at the annual book fair at the State Department Building at 23rd and C St. N.W. Admission is free. The sale will be from 10 am to 4 pm Sat. and Sun. Oct. 18, 19, 25 and 26. Books will be sold for half price on the last day of the sale.

## Free Walking Tours, Museums Admission Sat. & Sun Oct 4 & 5

Cultural Tourism DC will sponsor two days of DC Open House for the fourth year Sat. & Sun. Oct. 4 and 5 with 30 free walking tours—usually an hour—and free admission at more than 50 cultural and arts organizations and museums in 12 neighborhoods. Last year some 12,000 residents and visitors joined in.

Included is a free walking tour of the Southwest Waterfront, leaving Waterfront Metro Station at 4th and M St. S.W. at 1 pm Sun. Oct. 5.

## Black Arts & Heritage Sep. 15 – Nov. 30

Cultural Tourism DC is co-sponsoring 2 ½ months of programs celebrating the African-American experience in Washington, D.C.

One hundred programs at more than 50 organizations will highlight African-American history and culture in D.C. – including visual art, dance, music, theatre, history and literature.

The celebration is titled *Blues & Dreams*. Brochures listing events are available for pickup at Metro stations and participating organizations.

Log onto our Website: [www.swdc.com](http://www.swdc.com)

## The Southwester

P.O. Box 70131, Washington D C 20024

Southwester Staff

202/554-8560

Email text to:

[thesouthwester@yahoo.com](mailto:thesouthwester@yahoo.com)

Dale MacIver, Editor  
Susan Fischer, Advertising Co-chair  
Reporters: Maurice Boyd, Bill Brawner, Susan Fischer, Mary Clark, and Susan Carpenter  
Electronic Ink, Publication Production  
Herbert Holmes, Resial Shannon,  
Production Assistants  
Alvin Hudgens, Sports Writer

Mail your stories by Wed. October 8 to The Southwester, P.O. Box 70131, Washington, D.C. 20024.

Printing by Silver Communications Corp.

#### Advertising Rates

1/16 page	\$35	1/8 page	\$70
1/4 page	\$140	1/2 page	\$275
Full page	\$550		

Classified Ads—\$1 per word

Ad deadline Wed. October 8

## Southwest Community Calendar

### MONTHLY

Wed., Sept. 17, AARP at St. Matthew's Lutheran Ch., 222 M St. SW, 12 noon

Thurs. Sept. 18, Ward 6 Democrats- DC Democratic State Committee Special Election, Market V Gallery, 7th & North Carolina Ave., SE, 7:00 pm

Mon. Sept. 22, SWNA Monthly General Meeting, St. Matthew's Ch., 222 M St. SW, 7:30 pm

Wed. Sept. 24, Police Service Area 110 and 4th St. Neighborhood Group, River Park Community Room, 1311 Del. Ave. S.W., 7 pm

Thurs. Sept. 25, NARFE meeting, SW Library, K St. & Wesley Pl. SW, 12:30 pm

Fri. Sept. 26, Kiwanis 2nd anniversary celebration, \$20, Channel Inn, 650 Water St. S.W., 6:30 – 9 pm

Sun. Oct. 5, Free Walking Tour of SW, starts at Waterfront Metro Station, 1 pm

Tues. Oct. 7, Citizens Advisory Council, First Dist. Police Hdqrs. 415 4th St SW, 7 pm

Wed. Oct. 15, AARP at St. Matthew's Lutheran Church, 222 M St. SW, noon

Sat., Sun. Oct. 18, 19, 26, Used Book Fair at State Dept. 23rd & C St. N.W. 10 am – 4 pm

Sun. Oct. 19, Galilee AME Church 10th Anniversary service, at St. A's, 6th and Maine Ave. S.W. 3 pm

Mon. Oct. 20, Advisory Neighborhood Commission (ANC) 6D, monthly meeting, 65 I (Eye) St. S.W. (MAC Art Center), 7 pm

Thurs. Oct. 23, NARFE, SW Branch Library, K St. & Wesley Pl SW, 12:30 pm

Mon. Oct. 27, Southwest Neighborhood Assembly, St. Matthew's Lutheran Church 3rd & M St. S.W., 7:30 pm

### WEEKLY, BI-WEEKLY

Komen Toastmasters - First & Third Sat., S.W. Library, 10 am

Fil-Am Toastmasters - Second & Fourth Wed., S.W. Library, 6:15 pm

School St. Toastmasters - Every Tues, 400 Virginia Ave. S.W., Room 88 - noon

S.W. Kiwanis - First & Third Mon., S.E. University, 6th & I St. S.W. - 6:30 pm to 7:30 pm

Southwest Citizen Patrol with Officer Kenny Daniels - 4th & M St., S.W. Leave from Safeway parking lot, every Tues. at 7 p.m.

USDA Farmer's Market- corner of 12th St. & Independence Ave. S.W. 10 am to 2 pm, every Fri.

Please submit calendar items for the next issue by Wed. October 8 to 554-8560.

## Lose Weight Now! - Ask Me How

Lose up to 30 pounds in 30 days

All Natural Doctor Recommended

Call Harry 202-554-0592

harryheshie@aol.com Independent Herbalife Distributor



AVofRS

A VARIETY OF RECYCLING SERVICES

Non-hazardous Solid Waste Material

202-508-3397

Commercial District

Copyright 2003 A Variety of Recycling Services, LLC. AVofRS is a service mark of A Variety of Recycling Services, LLC. All Rights Reserved.

## ANC Opposes 130 Ft. Bldg. At SEFC

The Advisory Neighborhood Commission for Near SE/SE has testified before the D.C. Zoning Commission against part of the zoning change for the SE Federal Center at M St. SE and New Jersey Ave. SE across from the Navy Yard Metro Station.

At the Sep. 4 hearing Ed Johnson, secretary of ANC 6 D, stated, "...any building situated on that corner will be a significant part of the landscape. And if it is built to a height of 130 feet, it may be the only view for people exiting the METRO or occupying

adjacent offices."

Johnson ended his statement suggesting zoning commission delay until "the GSA brings forward detailed, comprehensive proposals for actual buildings."

At a July 26 hearing of the Zoning Commission ANC 6D commented on the proposed Arthur Capper /Carrollsbury HOPE VI Project, opposing the taking of private homes by eminent domain, the failure to sell out a final Community and Supportive Services Program, and the density of the project.

## Khoi Q. Tran, D.M.D. Comprehensive Dentistry



700 7<sup>th</sup> St. S.W. Suite 1  
Conveniently located  
inside Town Square Towers  
202-554-4000

Office hours by appointment  
Come see how we may improve your smile!  
Mention this ad and receive 40% off  
examinations, X-rays, cleaning\*

\*New patients only. Not applicable with third party payment.

## SAINI AIR-CONDITIONING, INC.

Heating – Air-Conditioning – Refrigeration  
Sales – Repairs – Installation

Since 1978 Licensed – Insured – Bonded – [www.sainiac.com](http://www.sainiac.com)

Serving Entire Metropolitan Area Over 18 Years Experience

Service 7 days a week, 24 hours a day

202-554-5528 / cell 202-270-5528

## Downtown Circulator Shuttle To SW

At a recent public meeting, the National Capital Planning Commission briefed the public on a proposed transit system to move residents, workers, and visitors around Downtown, including to SW Washington. The Circulator is an initiative of NCPC, the District Department of Transportation, the Downtown Business Improvement District, and the Washington Metropolitan Area Transit Authority.

The Circulator would supplement existing Metrorail and bus service and move workers and visitors around Washington's Monumental Core. It would help reduce traffic congestion and stimulate economic activity and would be an inexpensive, frequent, hop-on/hop-off service.

A recently completed Implementation Plan on the Circulator focuses on ridership numbers, frequency of the service, and fare structure. Currently there are four proposed routes, including a 7th/9th Street Route, which would go between 7th & 9th St., NW (the Convention Center & MCI Center) & 7th St., SW, to the SW Waterfront. Other routes include the White House/Capitol Route, the Monuments Route and a K Street Route.

A contact at NCPC for this project is Mr. David Levy.

His email is david.levy@ncpc.gov or you can call at 202/482-7247.

## Best Western Remodels SW Hotel

by Carole Early

Best Western Capitol Skyline Hotel, located at So. Capitol and I (Eye) St. SW is undergoing substantial renovations and refurbishing. There are new owners, Mera and Jason Rubell and a new manager, Scott Murdoch. It is a rarity in Washington, a hotel tucked away in one of the city's neighborhoods.

In addition to serving the out-of-town visitor, Best Western has a dining room that is called "The 19th Green". It is open from 5:00 pm to 10:00 pm and overlooks the pool. The "Skyline Cafe" is open for breakfast every morning from 7 am to 11 am.

Mr. Murdoch said that the hotel is considering having memberships to the pool area for community residents next season. Next month, much of the remodeling will be completed. SW is definitely experiencing a building boom.

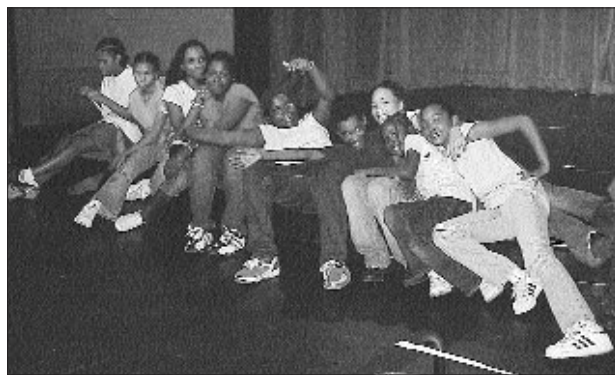
## SWNA, ANC Move Offices

Because of the potential closing and renovation of the NE wing of Waterfront Mall, the SWNA and Southwester Office which had been in the back of the Mall has moved to the vacant space which formerly housed the Video Store.

We are very grateful to the Kaempfer Company for this temporary space. The telephone number is still 554-8560 and the mailing address is P.O. Box 70792, D.C. 20024.

The ANC is moving its office to the Millennium Arts Center, 65 I (Eye) Street, SW, which will be its new mailing address. Its phone number will remain 202-554-1795.

# Briefly... in Southwest DC



Ayanna Brooks, Jazmin Jones, Ashley Horton, Christina Black, Taijwana Kittrell, Steven Powell, Terri Abney, Gwen Powell, Asia Powell

## Arena's Arts Camp

By Carole Early

Arena Stage and the Department of Parks and Recreation worked together this summer on Spotlight on the Arts Camp. This is an urban magnet camp featuring drama and dance. The drama instruction was provided by Arena Stage staff in a partnership agreement with the Department of Parks and Recreation through the King Greenleaf Recreation Center (the actual site of the camp). The campers were teens from all over the Washington DC metro area. Local teens from Southwest were, Terri Abney, Steven Powell, Taijwana Kittrell, Gwendolyn Powell and Lynette Gregory.

The campers presented a theater piece, entitled DREAMS AND MOTIVATIONS in the Old Vat Room at the Arena Stage on August 14. The performance was an origi-

nal play, written by the teens, that also included dance, poetry, and song. The play was great and the teens were so enthusiastic. The students bubbled over with a special vitality.

The support from both Arena Stage and the DC Parks and Recreation was terrific. Thanks to Desiree Urquhart and the staff that provided the drama instruction: Laura Zam, Director of Southwest Community Programs; Ashley Forman, Senior Community Engagement Intern, Katherine Earnest, Summer Intern, Paul Baumbusch, High School Intern, and the Production Managers, Lisa Vivo and Shelley Musleh.

Special thanks to King Greenleaf staff: Danielle Ruth, Choreographer and Camp Counselor; Portia Williams, Camp Director; and Marcus Ellis, Unit Manager of King Greenleaf.

## Rave Reviews For Cantina Marina

Cantina Marina received a terrific write-up

## Music Training, 5th Grade & Up

After school classes in woodwinds, brass and percussion/rhythm are being organized at Westminster Presbyterian Church, 4th & I (Eye) S.W. for 5th graders and older with a year or more of instrumental training.

D.C. music teacher Y.C. Laws, who ran a similar program this summer, will be joined by other professional musicians as instructors for a rigorous 9-month training program, 4-6 p.m. Mon. through Thurs. and 9-1 on Saturdays. Tuition can be paid in \$25 monthly installments, with some scholarships available.

Rev. Ruth Hamilton, co-pastor at Westminster, can be reached at 484-7700 for information and registration forms. "If the schools had enough resources, we wouldn't need this program," says Rev. Hamilton. "The community has to step in and help. In four years with Friday Jazz Night at Westminster, we know that these professional musicians are dedicated to helping youth."

## On the Waterfront - OW

(A new column of unsubstantiated rumor in Southwest-Carol Early, guest editor)

**WISH YOU WERE HERE.** While Southwest resident and DC police chief Charles Ramsey searches high and low for causes for the recent spike in the crime rate, we just got wind that the 1st precinct's star police officer, Rob Elliot, and a few hundred of his brothers in blue are currently vacationing in scenic Iraq as guests of the National Guard.

So who's minding the store while they're sunning themselves on the banks of the historic Euphrates, scarfing down those gourmet MREs (Meals Ready to Eat) in the fertile crescent of civilization and dodging RPGs (rocket propelled grenades) on the streets of ancient Baghdad? Southwest residents are meanwhile praying for their safe return.

**STRANGE AND GETTING STRANGER.** The four way tug of war over the old Randall Junior High/ Millennium Art Center has taken yet another twist, according to insiders who tell us that all sides have lawyer-ed up. One of the parties, whose attorney has been likened to a Rottweiler on steroids, has been going after every body and his brother on the opposing side.

Meanwhile, the Corcoran and MAC have "dissolved their partnership", with Corcoran's art school "pursuing opportunities at other venues". The city agency that controls the building and the charity that operates the homeless shelter in the Randall gymnasium are pointing fingers at each other as rumors abound about MAC's insolvency. Spokespersons for the parties involved declined comment and referred our sources to DC Superior Court for an official update. Everybody in the neighborhood is looking forward to jury duty. If the city evicts the artists, can they stay at the shelter?

**GOTTA HOT TIP? WANT TO SUBSTANTIATE A RUMOR? DROP A DIME OR IT'S E-MAIL EQUIVALENT ON US** by e-mailing OW here at thesouthwester@yahoo.com.

## Jefferson 4th Best Of 20 In D.C.

Jefferson Jr. High in S.W., D.C., has the fourth best Stanford 9 Achievement Test scores of the 20 public middle schools or Jr. high schools in D.C. Only Deal Jr. and Hardy Middle School in NW and Stuart-Hobson Middle School on Capitol Hill outrank Jeff.

## Southwest Podiatry

300 M St. S.W.

Dr. Vesta McDowell

Podiatrist / Surgeon

Board Certified Wound Care Specialist

New Daytime Hours

Mon., Wed., Th., 10 - 6 • Fri. 10 - 2

Come check us out! See what we can do to improve your feet!

(202) 488-7740

We are conveniently located on the ground floor of the CARROLLSBURG CONDOMINIUM just across from METRO's green line WATERFRONT Station in the WATERSIDE MALL AT 4<sup>th</sup> & M Sts. S.W.

We accept: All major insurance plans. Medicare, Medicaid, Care First Blue Cross Blue Shield, MAMSI grp./Alliance, M.D.I.P.A.

We also accept: Cash Master Card Visa Discover American Express Optimum Choice

# Apartment House For Delaware & H Street SW

By Carole Early

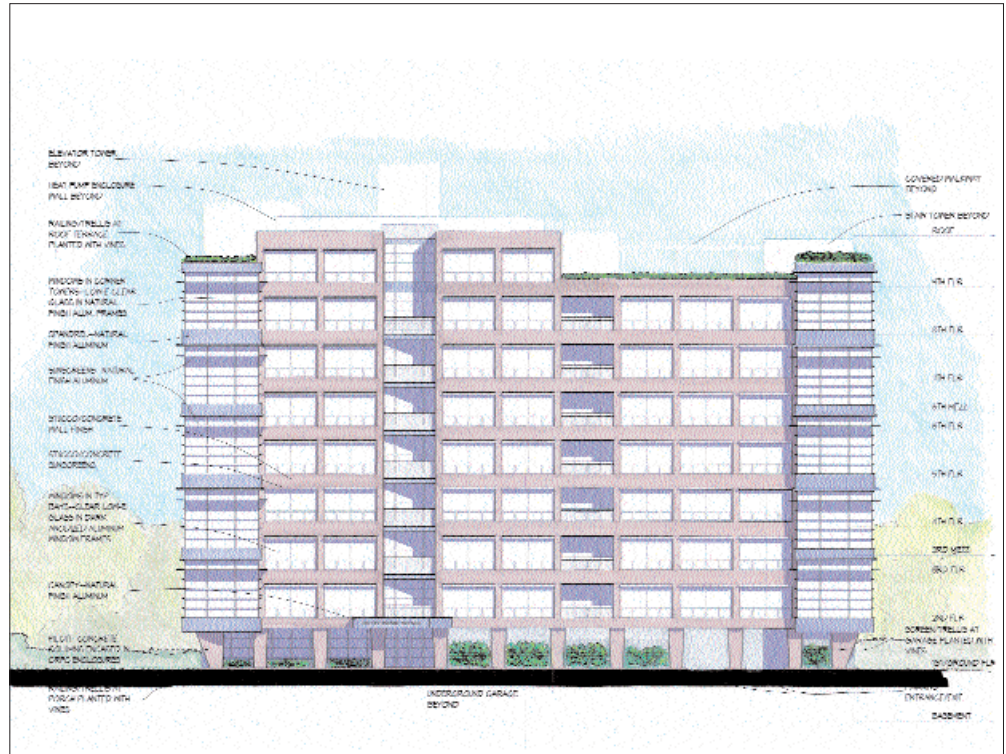
Since September 2002, a church building which was the original Friendship Baptist Church has been vacant and for sale. A developer, Steve Tanner of Square 643 Associates is interested in developing this 16,643 sq.ft. property. After much consultation by Tanner with the seller (The Redeemed Temple of Jesus Christ), nearby businesses and the Millennium Arts Center, residents and the Board of Directors of the adjacent Capitol Park IV community, he decided that a dwelling place, either condominiums or rental apartments, would be the best use for this property.

Tanner believes residential development is desirable because this location is somewhat isolated and could benefit from additional housing and the round-the-clock activity of people living there. The adjacent Millennium Arts Center is a positive feature of the vicinity, but still leaves the former Randall School complex somewhat quiet and underutilized. The homeless shelter and drug rehabilitation center operated by Catholic Charities in part of the school building invites a degree of loitering and public fear of the location. Over the years the church building has fallen into disrepair, and itinerant squatters and loiterers have become a problem. Additionally, the exterior is covered with an asbestos-like fiber that would be extremely expensive to remediate if the church building were to be renovated for further religious or institutional use. (The Redeemed Temple tried for several years to find another congregation to buy the church, but with no success.)

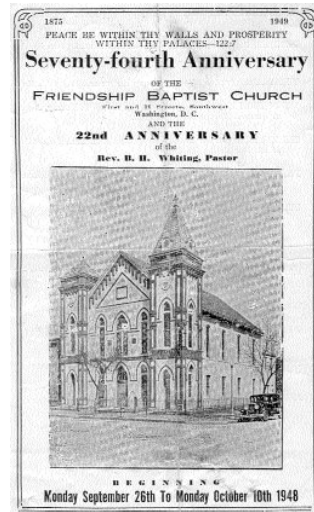
Tanner's proposed condominium apartment house will be eight stories (88 feet high), and will have 60 units and 46 parking spaces. The site will be landscaped. The architect's design draws upon design features from townhouses in Southwest as well as features from Southwest apartment buildings to create a modern look that is still compatible with the neighborhood. The zoning application will be for a planned unit development with R-5-D zoning. Tanner also proposes to provide new landscaping and a design feature for the traffic circle at the terminus of Delaware Avenue.

To the north, west and southwest of the site is the Capitol Park IV residential community of townhouses, townhouse apartments and high-rise apartment buildings. To the east is the Randall Recreation Center, and to the south the former Randall Junior High School, now used as the Millennium Arts Center and a homeless shelter. Beyond these to the south is the Best Western Motel, which is under new ownership and undergoing a terrific rehabilitation program to further enhance this corner of Southwest. Other nearby uses are Friendship Baptist Church and Greenleaf Gardens apartments.

Tanner and his architect will present the plans at the September 22 SWNA meeting.



caption



1948 church program for its 74th anniversary.

## DCHA "High Performer"

The US Dept. of Housing and Urban Development (HUD) has awarded the D.C. Housing Authority "high performer" designation in the areas of finance and management.

In the annual assessment for FY 2002 HUD gave the highest designation for DCHA in the finance area and "standard per-

former" in physical conditions and resident satisfaction. Overall it earned 88 out of 100 points in the evaluation.

The D.C. Housing Authority, with a budget of \$250 million, manages 9,230 public housing units and administers 11,766 Housing Choice Vouchers. DCHA is led by Executive Director Michael Kelly.

## River Park Friends, Inc.

**18YS...**  
**Let's stop TALKING and DO SOMETHING TOGETHER**



## River Park Friends IS DOING SOMETHING !

For example, in 2003 alone, River Park Friends, Inc.

- helped over 200 children go on field trips, study black Maritime history, and focus on science and math in several programs, including City Gate, the Living Classroom Foundation, the RunaUs Learning Center, and the Southwest Child Development Center;
  - supported one scholarship for a college student under the southwest Neighborhood Assembly scholarship fund; and
  - paid for registration fees for a football team of 24 youth in the Metropolitan Boys and Girls Club #4 in Southwest.
- Southwesters Helping Southwesters**

**YES, I want to support River Park Friends, Inc. with my tax deductible contribution:** \_\_\_\_\_ \$200 (Sponsor); \_\_\_\_\_ \$100 (Booster); \_\_\_\_\_ \$50 (Supporter); \$ \_\_\_\_\_ (Other)

Please make check payable to River Park Friends, Inc. (a nonprofit charitable and educational organization under Section 501(c)(3) of the Internal Revenue Code).

Name \_\_\_\_\_

Address \_\_\_\_\_



Mail to: River Park Friends, Inc; Coralis Parlee President; 389 O St. SW, Washington, DC, 200024 **THANK YOU !**

## School's Back

by Maurice Boyd

Both principals Almeta Hawkins and John Goudeaux, at Bowen Elementary and Amidon Elementary, respectively, are looking forward to busy, challenging, worthwhile years with their staffs and students.

They both showed similar confident and hopeful attitudes within the context of ongoing deep difficulties besetting not only our local public schools, but all over the country. Some critics and cynics seem to have practically written off city schools as beyond redemption but these two educational leaders are by no means ready to do that.

### BOWEN ELEMENTARY

At Bowen, located at Delaware and M Streets, SW, Ms. Hawkins stressed the need to help every child all-around, with high expectations for all.

Students made 4 of the 6 major goals for last year, and they hope to repeat this or to do even better. Proficiency in reading and math are to be expected.

Courtney Milloy, in the Post, says that science and math represent huge challenges for urban students, and that they are a basis for learning and independent reasoning. Both principals seem to agree with this.

It is essential that parents be brought into the mix. They may volunteer for the classroom, and some families may team up in the neighborhood. Parents are invited to school for "Chat & Chew" sessions. Speakers offer expertise on a vital concern to all. Parents may utilize job training or search for resumes.

Finances are tight for the DC Public Schools. What can the community do?

The Kiwanis Club of Southwest contributes money for equipment, with a designation for the Student Activity Fund, other organizations do likewise. Anyone interested in contributing

money, make check out to Anthony Bowen Fund.

At Bowen, there is one pre-K (20 student limit), two kindergartens (22), two 1st (18-20), two 2nd, 3rd, 4th and 5th (all have 25-26 students). There are 302 students and 25 teachers and administrators in the school. Only 5% of all students do not qualify for free lunch. All wear uniforms daily. Community members are invited to come by the principal's office, introduce yourself. If they can they'll talk with you. If they are not able to, they'll be glad to note the community interest.

### AMIDON ELEMENTARY

Principal Goudeaux of Amidon, expressed many of the same concerns and outlooks. He emphasized the need to get at the basics of math problem-solving, moving into abstract math in fractions and long division, in preparation for selected students in 4th and 5th grade, and all of the 6th graders to take pre-algebra, so that they can be ready to learn algebra and geometry in junior high school. They will learn this subject in the "I Can Learn" computer-assisted program.

Science teaching and learning is also emphasized. A special science teacher is employed for grades 2-6, with a "Living Classroom" as a core. This is an experience-based, science-based garden project.

Goudeaux says that children want to learn and that teachers are motivated to want to teach. The school aims to produce the good, worthwhile citizens necessary for American democracy to flourish. He believes that the school system is not failing, but rather, it is in transition. We have a multi-faceted set of problems, which must be worked on by all elements of our society.

At Amidon, volunteer resources are needed. To volunteer, you may contact the Principal or the volunteer coordinator, Gerolyn Wicker at 724-4867 or email at john.goudeaux@k12.dc.us.

### FINAL THOUGHTS

Just after the interview, I went home and happened to catch the last few minutes of the "John Walsh Show" on TV. It was dealing with the problems of American Public Schools. Featured was Principal Frank Nickens of the Brooklyn Boys and Girls School, a former "blackboard jungle" which was turned into a high performing institution. Nickens underlined the keys to this school's success. They were discipline among the students, respect all around, no clothing styles and decorations which incite violence, no contrabands, and mandatory inspection for entry into the building. This sounds familiar. To sum it up, "Everybody must be involved."



The redesigned SW Library.

## SW Library

This really looks like a library.

From the grey rug with its subtle design to the new circulation desk, to the small round tables in the reading room, it all looks so uncluttered - like a place to get a lot of work done.

The hours are: Monday, Tuesday, Thursday & Saturday 9:30 - 5:30 and Wednesday 1:00 - 9:00. Closed Friday and Sunday.



Unlimited ...

- Crab Legs • Steamed and Fried Shrimp • Steamed Clams, Mussels and Crawfish
- Grilled Fish • Soup and Salad Bar • Made to Order Pasta • Jambalaya
- Rotisserie Chicken • Assorted Desserts and So Much More ...

**\$19<sup>99</sup>**

ALL YOU CAN EAT SEAFOOD DINNER BUFFET

Offer Valid Monday - Thursday Only

Must mention ad to receive discount.

Not valid with any others or discounts. LIMITED TIME OFFER

900 Water Street SW, Washington, DC • 202-488-8515 • www.phillipsfoods.com

## Ginkgo Gardens

Your urban garden center on the Hill.

911 11th ST. S.E.

- annuals
- perennials
- trees
- shrubs
- soil
- mulch
- statuary
- furniture
- fountains
- and so much more
- delivery available



8-6 Mon.-Sat.  
9-5 Sunday

202 543 5172  
ginkgogardens.com

## “Art Enables” At Millennium

by Mark Clark

Stefan Bauschmid, Art Director for Art Enables, an arts program for adults with developmental and/or mental disabilities, located at the Millennium Art Center at 65 I Street, S.W., announced that the program has achieved full enrollment of 20 participants for the Fall term that began September 2nd. From half to two thirds of all current and past Art Enables participants, aged 23 to 60, are D.C. residents referred by local agencies and selected after a thorough interview and assessment. They include a former student of Randall Junior High School, the building which houses the Millennium Art Center.

Mr. Bauschmid greeted visitors in the cheerful, well lit Art Enables studios on a recent afternoon, surrounded by attractive, well framed paintings from previous sessions. He beamed as he listed the center's recent achievements. The program, incorporated in 2001 and opened in newly renovated space at the Millennium Art Center, has achieved remarkable success in a short time, generating

art sales through in-house exhibitions, participating in area shows like Art-o-matic at the Waterfront Mall in November 2002, producing and distributing a line of popular Christmas cards, and by placing participants in community collaborations.

While serving as a model for the design of programs in other communities, Art Enables has produced an award-winning artist in a national competition, and had the work of several participants selected for inclusion in exhibitions at a commercial gallery in the exclusive 7th Street gallery corridor. A number of venues have already expressed interest in showing the work of Art Enables participants in the upcoming Fall season. Mr. Bauschmid proudly pointed out beautiful masks, paintings and sculptures produced in the studio and explained how 60% of the sales price of the artwork goes to the artist, and 40% is returned to the program, which is supported by grants from foundations. Studio tours can be arranged by calling 202 554-9455. For additional information about programs, exhibitions and donations, their website is [www.art-enables.org](http://www.art-enables.org). ■

## River Park Friends Active In Southwest

River Park Friends, Inc. has been in existence for five years. This summer it has been granted permanent 501(c) 3 status by the Internal Revenue Service.

Since it began, River Park Friends has given grants to several local entities including the Metropolitan Police Boys and Girls Club, the Southwest Neighborhood Assembly Scholarship program, the Appletree Institute, and the EmmaUS Learning Center. In 2003, grants have been made to the Southwest Child Development Center, the Living Classrooms Foundation, City Gate and the First District MPD District Citizens Advisory Council Award Banquet. Many children in Southwest Washington, DC have benefited by these grants. In awarding grants, River Park Friends uses several Criteria, including

that the programs operate in Southwest, are non-sectarian and relevant to Friends' missions of community development, education and charitable activities.

This organization conducts a major fundraising campaign in the fall of each year. However, contributions are solicited and accepted throughout the year. See our separate ad in this issue of the Southwester for additional information on contributions. We urge Southwest DC residents and businesses to join us in providing important resources for organizations that request these grants. Your donations to River Park Friends are tax deductible.

Current officers are: Dr. Coralie Farlee, President; Robert Zigler, VP; Betsy Hobby, Secretary; CW Hargrave, Treasurer. ■

## Mandarin Hotel Opens in Spring

The Mandarin Oriental, in SW Washington DC is scheduled to open in the spring of 2004. Lauren Rotchford was just named as Manager of Communications. She will report to the Director of Sales and Marketing and she will supervise all communications efforts and advertising and public relations initiatives at the luxury 400-room property. Rotchford was previously Corporate Manager of Marketing for The Ritz-Carlton Hotel Company, L.L.C. in Atlanta, GA.

The hotel is part of the Portals project located at 1330 Maryland Avenue, SW, a mixed-use development comprising significant upscale office, retail and restaurant components. The Portals project is being developed by the Republic Properties Corporation. ■

*Live life for love  
Not wealth or fashion  
God's sweetest fruits  
Are grace and passion.  
Karma shave.*

This message is brought to you on behalf of the Religious Society of Friends (Quakers).

## Update on Mall Redevelopment

Until a major tenant for the property has been found, reconstruction of the mall and adjoining towers is on hold. Though the 4th Street cut-through could theoretically proceed in the absence of a major tenant, it too is on hold at the present time. Meanwhile the developers are planning cosmetic improvements to the site to make it more pleasant in the interim. Improvements include resurfacing and restriping the front and rear parking lots and increased attention to landscaping.

The chainlink fence which now encloses the north side of the property was erected as part of the developers' effort to improve security and public safety on the 13-acre site, according to Assistant Property Manager, Mike Grasty. Other security measures include hiring an all-SPO (Special Police Officer) security force (Watkins). SPO's are licensed and trained to make arrests. Please note that, as of September 1, mall hours were extended until 11:00 p.m. to coincide with Safeway's

closing and accommodate shoppers who live to the north of the property.

Two-front parking continues to be free in the front and rear lots or in the garage (where there are about 200 spaces available for use); long-term parking in the rear parking lot costs \$25.00 per week or \$80.00 a month and can be arranged during mall hours through the Watkins security office adjacent to CVS. People who need to return to their cars after the mall closes at 11:00 p.m. can gain access by contacting the on-site security (on duty 24 hours a day) at the number posted on the window of the security office (next to Negril's coffee shop).

In the interest of serving the Southwest community, the developers are supporting KIDSAFE, an after-school program for children that hopes to open its doors at St. Augustine's church later this fall. More news on this will be forthcoming.

For further information about the development team and to view the proposed site plan, see the website: [www.waterfrontdc.com](http://www.waterfrontdc.com). ■

## Public Safety Near Waterfront Mall

A public meeting was held at the Millennium Arts Center on August 18 to discuss safety concerns which have arisen in the wake of the developers' decision to close the mall to pedestrian traffic at 10:00 p.m. [now 11:00]. The consensus among residents who spoke was that walking along 6th or 3rd Streets to reach I Street at night is more dangerous than going through the park to the north of the mall.

Mike Grasty, representing the Kaempfer Company, said that recent security-related decisions by the developers—which include hiring a more proactive security force and erecting a chainlink fence around the rear parking lot—are motivated by concern for the safety of mall patrons and Southwest residents traversing the property. He pointed out that security issues on the site became much more complex with the departure of the EPA and the federal guards who used to be on the property 24 hours a day.

Commander McGuire, District 1 Police, said that the police are aware of the problems in the vicinity of the mall, that extra officers, including a foot-beat officer, are deployed at night, and that cooperation between the DC Police and the National Park Service Police in undercover operations has resulted in a number of recent drug-related arrests. ■

## Highway Construction Career Training

The Progressive Partners' Program (PPP) offers a 16-week comprehensive pre-employment, pre-apprenticeship training program with support services for District of Columbia residents who qualify.

The purpose and goal of the program is to prepare and place job-ready PPP graduates in apprentice, trainee positions and jobs that have potential for career advancement in the Highway Construction Industry.

Women, minorities, TANF recipients and the unemployed are encouraged to apply!

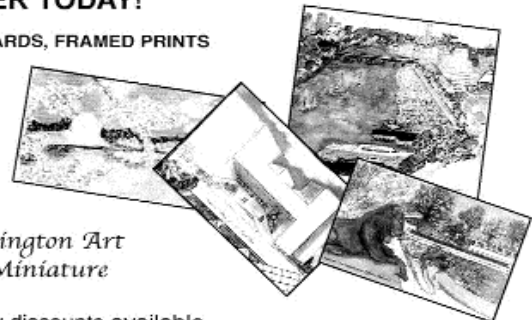
To apply call: (202) 238-4710.

Applicants must be drug free and able to complete training program.

The Progressive Partners Program is a joint effort between the District of Columbia Department of Transportation (DDOT), United Planning Organization (UPO) and The Center for Empowerment and Employment Training (CEET). ■

## ORDER TODAY!

NOTE CARDS, FRAMED PRINTS



Washington Art  
in Miniature

Quantity discounts available  
Select your favorites from 60 paintings at:

[www.artbyjoan.net](http://www.artbyjoan.net) or call Tierney Enterprises 202-554-2020

## Rev. John Talbott Leaves St. A's & SW

By Robert Crane

Sunday, August 31, marked the last day of active parish ministry for the Rev. John Thayer Talbott of St. Augustine's Episcopal Church.

Rev. Talbott will take a six-month sabbatical leave during which time he and his wife, Anne, will remain based in the Southwest. After February they plan to move to Connecticut where they have purchased a new home.

Since coming to St. Augustine's eleven years ago, he has been a regular participant in several clergy / community organizations including Southwest Group Ministries. He led the parish in its participation with the Washington Interfaith Network focusing on establishing after-school programs at several Junior High Schools in the Capitol Hill area and in the construction of low-income housing in Anacostia.

Rev. Talbott was born in New York City. In addition to his wife, Rev. Talbott's family includes three daughters, a surviving twin brother and a sister. He left New York after high school and had many jobs before graduating from the University of Alabama and Vanderbilt Divinity School. He was ordained a minister with the Disciples of Christ and led two churches in Tennessee before moving to the Episcopal Church. After a program of Anglican Studies at the University of the South, he was the rector of two Episcopal churches, also in Tennessee.



Rev. John Talbott

He left a large suburban church in Shelbyville, Tennessee to come to St. Augustine's. St. Augustine's Church has remained fairly stable during his service here, he said. At one time, Temple Micah shared facilities with the church. They moved to their new location on Wisconsin Ave. Half of the members of St. Augustine's live in the Southwest, another ten percent within the District of Columbia, and forty percent in Maryland and Virginia. He said many of the churches in Southwest exhibited this same diversity. In Tennessee, churches worked more effectively in the community because almost all of the members came from that area. In the Southwest, it was difficult for churches to achieve a critical mass of members involved in the community, Rev. Talbott said he's sorry to leave

Southwest before seeing what changes the new planning processes will bring. When he came here, this was a comfortable little neighborhood. There was some social divide between the poor and the middle class, but it really felt like a community. Now there is a renewed interest in housing and a new group of residents are discovering the area. Plans being put in place will change the face of Southwest. In the future, he wondered whether the aging of the original redevelopment infrastructure would lead to new stresses for the community, with the forces for change and new development lining up against those who want to retain the feeling of the old Southwest. ■

## 41 SW Youth in Summer Program

By Carole Early

The 5-week summer program "BEES [Building Environmental Solutions] for ATLAS" graduated 41 SW youth on Aug. 8 at Southeastern University.

Teenagers between the ages of 14 and 16 are encouraged to apply for the winter session of the program which starts in November (and pays a stipend). Call the D.C. Department of Employment Services (625 H St. S.E.) 202-698-3493. Ask for Chandra Artis.

Teenagers from Southwest in the summer program were: Nicholas Bolden, Dimitri Boykins, Jeffrey Broadwater, Arteesha Coleman, Jeremiah Farmer, Mercedes Ford, Meshawn Ford, Carla Frye, Anthony Green, Darryl Green, Whitney Hamilton, Destiny Harris, Patricia Harris, Derrenzo Hines, Doneeta Hines, Ebony Jackson, Cashmere Johnson, Javon Johnson, Maurice Jones, Diamond Kirkland, Gregory Kirkland, Rodney Lawrence, Ronnicka Matthews, Andrika McConnell, Maureena Mureni, Kyva Ponkey, Karl Pitts, Jr, Shantoe Prince, Ashley Rawlings, Shun'e Reynolds, Cierra Robinson, Curtis Robinson, Monique Smith, Jasmin Thomas, Jeffrey Ulmer, Kevin Wheeler, John White, Nathan Williams, Shawn Williams, Alicia Wood, Angelique Wood.

In this summer's 5-week session, the students focused on: writing resumes, completing job applications, developing job skills, enhancing their job maturity skills and studying the environment. While learning the above-stated job skills, they went on field trips to the Anacostia Waterfront, various museum in Washington, DC, a tour of Howard University, Heritage Island (where they participated in a conservation project) and the Patuxent Research Center at Great Falls.

A special awards certificate was issued to Nicholas Bolden. He was recognized as the overall highest achiever. After the ceremony, there was a lovely reception. The BEES Program is conducted by the PETRA Group, Inc. which is funded by the Department of Employment Services (DOES). The Project Director, Mrs. Nell Dobbins, lives in SW. ■

## Southeastern University Offers 39 Online Courses

In an exciting new development, SEU has put 39 of its courses online and intends to increase this number rapidly in coming quarters. Initiated under the guidance of computer science professor Emilia Butu, the online courses were originally designed to increase flexibility for traditional SEU students, but soon they will be offered to remote students (e.g., people in the military or other federal services) who may one day earn an SEU degree without ever having set foot physically on the campus.

SEU Online is hosted by E-College, a Denver-based firm which offers a virtual academic environment that has won high praise from students, Professor Butu says. There are chat rooms for threaded discussion of assigned course topics, online office hours scheduled by the professor, online academic advising, and even a student lounge where students can meet for a virtual cup of coffee and exchange uploaded photographs. In addition, the technical support is excellent and available to students 24 hours a day.

In the fall term that has just begun, students can choose from online offerings in all of SEU's departments (Business, Computer Science, Public Administration and Liberal Studies) and can apply the credits earned toward the appropriate degree or certificate program. Most of the online courses are being taught simultaneously in the traditional classroom, but because the online system is asynchronous, the online student can log on to a given lecture at any time—meaning that earning a degree has become even more convenient for the working adults who make up the majority of SEU's student body.

For more information about SEU and SEU Online, visit the university at [www.seu.edu](http://www.seu.edu). ■



# Arena Stage Perks For SW

**(ARENA: A COMMUNITY THEATER)**  
by Wallace Babington

We have all become increasingly aware that Arena Stage is a renowned, critically acclaimed national theater. However, it is time for us now to realize that Arena is our Southwest community theater. Such recognition may be long overdue – so let's set the record straight.

A key member of Arena's professional staff devotes full time working to assure that Arena is very much a part of the Southwest community. That staff member is Laura Zam, Director of Southwest Community Programs. A brief overview of the programs for which she is responsible will give some insight into Arena's commitment to becoming significantly involved in our community:

- An after-school program that involves teens in acting and improvisation with a goal of performing an original work at Arena Stage.
- A challenging program in our Southwest schools designed to develop literacy skills through creative dramatics and story telling.
- Drama workshops that include improvisation, acting and writing are offered for both young people and adults at settings throughout our community.

But perhaps the most interesting and promising program is a new feature that Arena is offering exclusively to Southwest community residents. This is an invitation for us to purchase tickets to Arena productions for just \$10. The offer is made for the first Wednesday preview performance of each production (for example, October 8 and November 19). Tickets may be purchased in advance and are limited to four per person. Information and details are available by calling Arena's Sales Office at 488-3300.

There are many other activities that Arena makes available that are open to Southwest resident. These include discussions of shows, volunteer projects, ushering, and Molly's Salons. Arena wants to be a part of our lives, a part of our community. Let's take advantage of that. ■

arena stage  
molly's artistic director

**crowns**  
written and directed by  
Roger Brown  
inspired from the book by  
Walter D. Mignolo and  
Craig Womack  
in partnership with the  
Howard Center for  
Diversity Studies  
and the Smithsonian  
National Museum  
September 14, 2003  
at the Kennedy  
Center

(202) 488-3300  
www.arenastage.org



Softball on Sunday evenings at King Greenleaf Field, O St. SW and Canal St was on the minds of these Cavaliers preparing to practice recently. They played at King-Greenleaf Field Sundays evenings.

### Kiwanis Buffet Fri. Sep. 26 At Channel Inn

To celebrate its second anniversary in Southwest, the local Kiwanis club will hold a buffet and awards program in the Main Deck Room of Pier 7 at 650 Water St. S.W.

Admission is \$20, with tickets available at the door. For information contact Willie Robinson, 202-488-3597 or Diane Mayo, 202-479-2732. Free parking. ■

### Play Readings To Feature Five Playwrights

To help develop new American plays Arena Stage has commissioned five playwrights. Pulitzer Prize-winners Nilo Cruz, Robert Schenkkan and Wendy Wasserstein join up-and-comers Melanie Marnich and Sarah Ruhl.

Wendy C. Goldberg is in her fourth season as Artistic Associate at Arena Stage and has developed over 50 plays in the three years of the new play program called "Downstairs," referring to the Old Vat stage in the lower level of Arena. ■

吉利大飯店



## Jenny's Chinese Restaurant

Waterside Mall - 401 M St. S.W. Washington, D.C. 20024  
EPA Building - At Waterfront Metro Station on Green Line

Hours: Monday-Friday 11:00 a.m. - 10:00 p.m.  
Sat., Sun., Holidays 12:00 noon - 10:00 p.m.  
Happy Hour: Mon. - Fri. 4:00 p.m. - 7:00 p.m.

Phone: 202-554-2202 • Fax: 202-488-8610

**Free Parking**

**Banquet room - up to 200 people**

**All You Can Eat  
Lunch Buffet**  
**\$6.95**  
American & Chinese Cuisine  
11:30 a.m. to 2:30 p.m. Mon. - Fri.  
Up to 20 Items to Choose from Daily

### Dinner Special (after 7:30 p.m.)

**Buy 1 entree and get  
50% off 2nd entree\***  
(\* of equal or lesser value)

One coupon per table • Dine-in or Carry-out  
Valid until November 30, 2003